



Gary Coetzee
0823261932
gary@koalet.co.za

Contact Pretoria

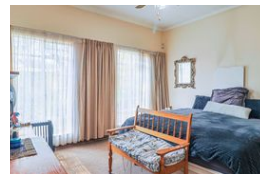
082 326 1932

555 Jennings Street
Dasport
Pretoria
0082



SOLE MANDATE

Web Ref RL9978



R3,024,000

🛏️ 4 🚿 3.5 🚗 2

Monthly Bond Repayment R30,700.52

Calculated over 20 years at 10.75% with no deposit.

Transfer Costs R165,019.00 **Bond Costs** R44,070.00

These calculations are only a guide. Please ask your conveyancer for exact calculations.

Monthly Rates R640

Prime Corner Property with 4-Bedroom House + Incomplete 3-Bedroom House-Customize to Your Potential

This spacious corner property in sought-after Lyttelton Manor offers incredible value with two homes on a massive 2508m2 stand.

The main house features:

- 4 Bedrooms (2 with full ensuite, main with walk in closet)
- 3.5 Bathrooms
- Lounge, dining room and separate tv-room
- Fully fitted kitchen with ceiling fan and stove
- Study with built in cupboards
- Double Garage and 3 covered carports
- Huge yard with garden

Bonus: An additional 3-bedroom house is already under roof with electricity and plumbing installed, and just needs finishing touches. The second home includes a kitchen, lounge, guest bathroom, and 3 bedrooms(each with an en-suite).

This property offers incredible income potential, ideal for dual living or rental income once the second house is completed. With a stand this size and location, opportunities like this...

Features

Pets Allowed	Yes				
Interior		Exterior		Sizes	
Bedrooms	4	Garages	2	Floor Size	608m ²
Bathrooms	3.5	Carports / Parkings	3	Land Size	2,508m ²
Kitchens	1	Security	Yes		
Recep. Rooms	2	Pool	No		
Studies	1	Views	False		
Furnished	No				